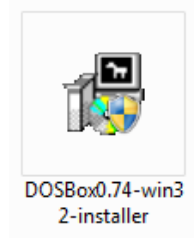


DOSBox Installation tutorial

DOSBox is a program that emulates the functions of MS-DOS, including sound, graphics, input, and networking.

Step 1:

Download the appropriate version of the program for your operating system, then Install the DOSBox 0.74setup on your computer.



Step 2:

Make a folder for you to use it when you need to run MS-DOS commands. Create your folder on D:\ drive for example then name it 8086

Step 3:

For our lab you have to put all 8086 assembler commands inside this folder. (See figure 1)

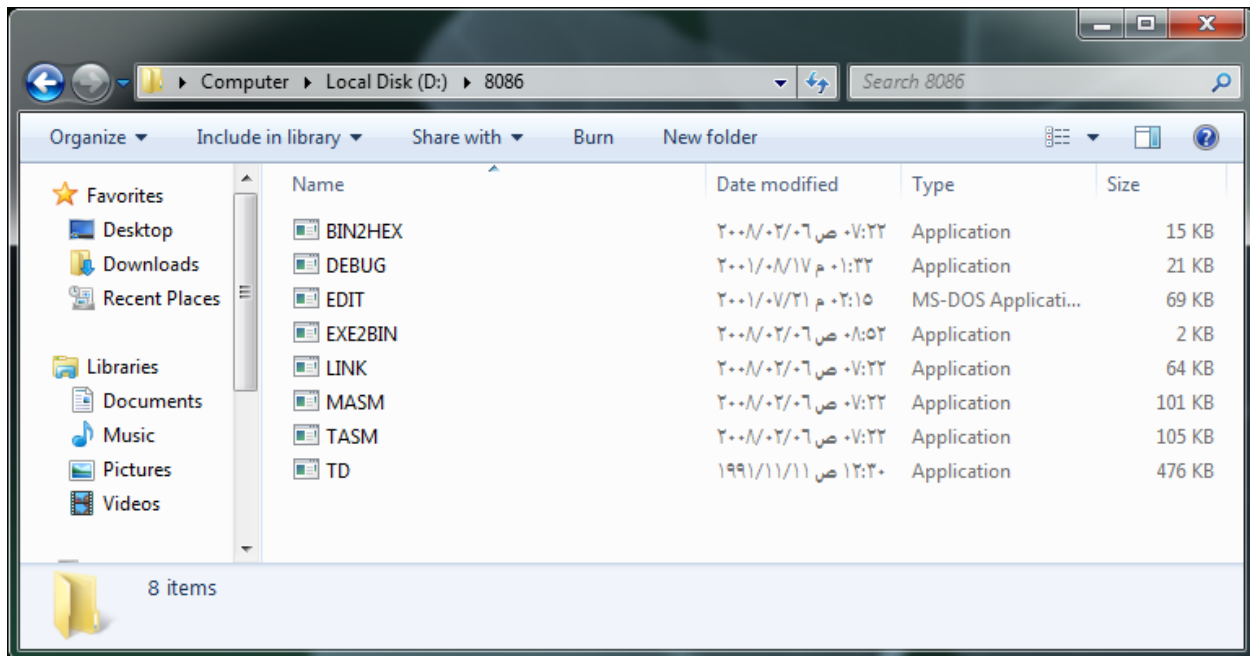
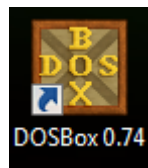


Figure 1

Step 4:

Click on DOSBox 0.74 to run the program.



Two black screens will be appeared, but we will use the below one. (Figure 2)

DOSBox Installation tutorial

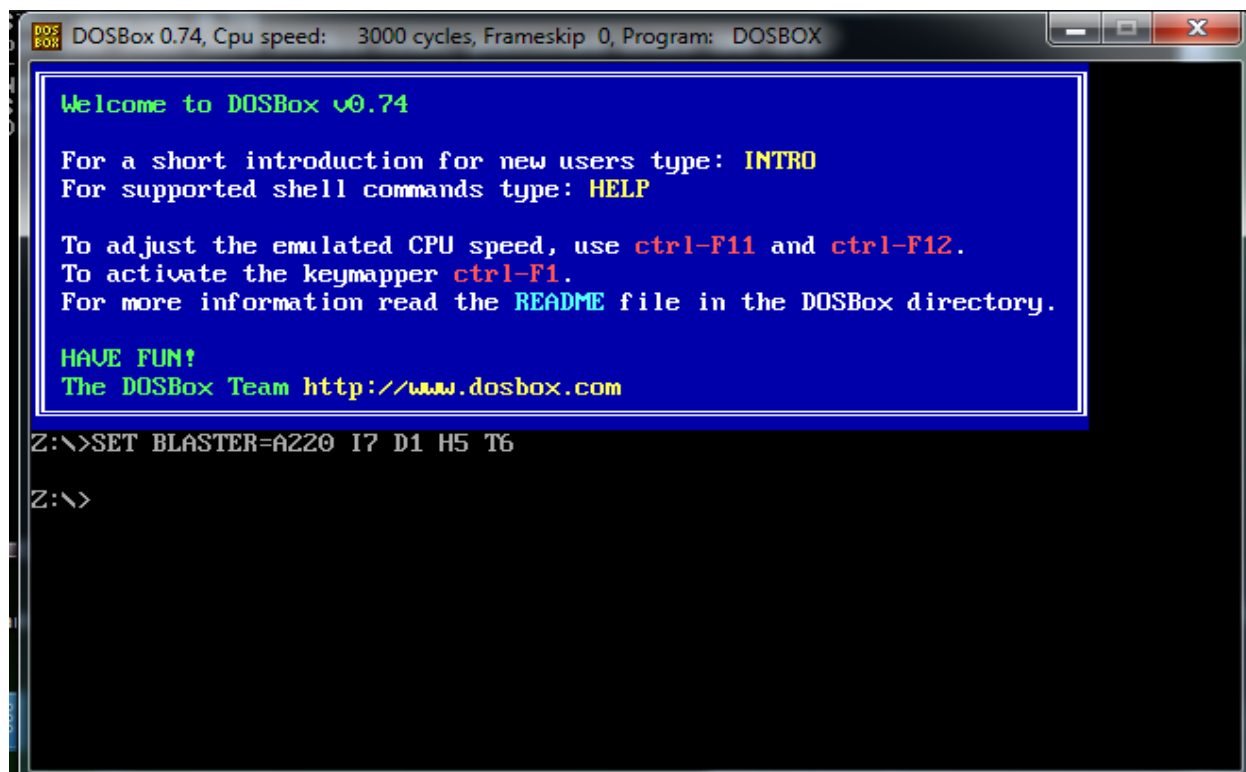
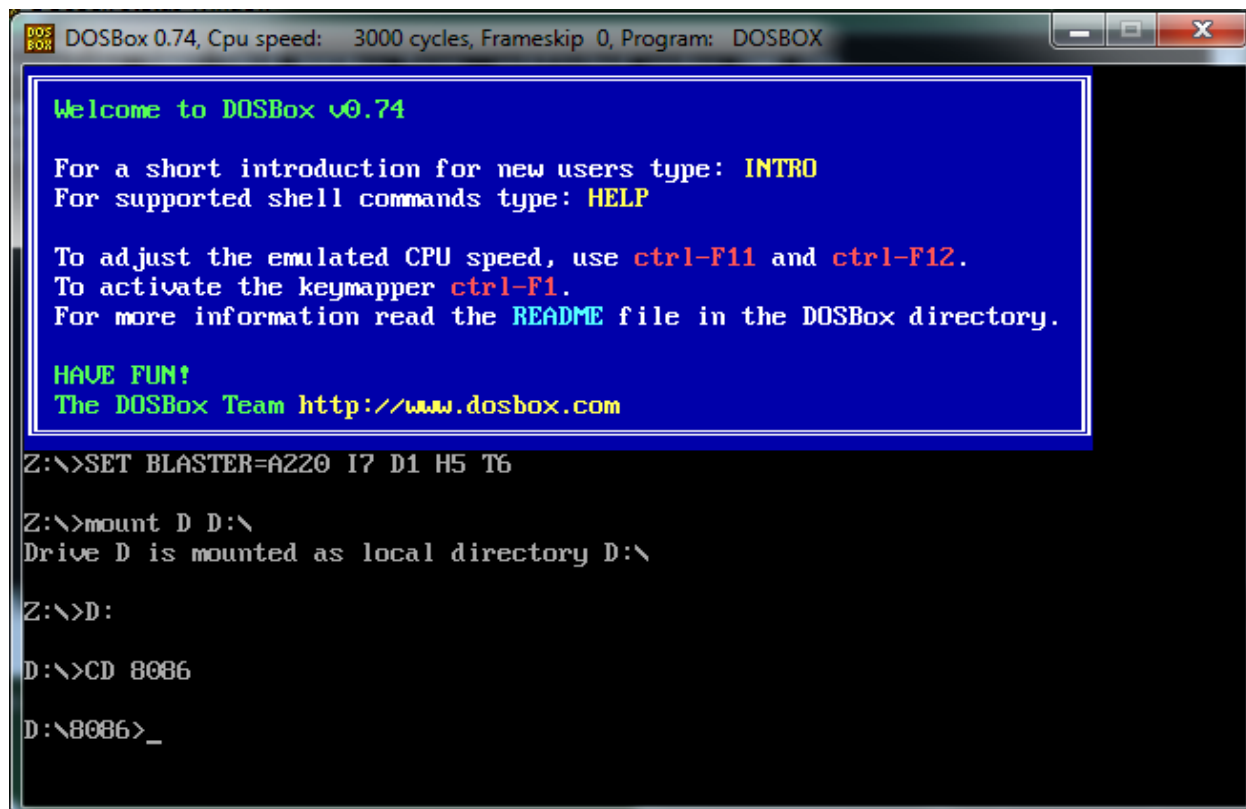


Figure 2

Step 5:

Mount the **D:\8086** directory, by writing the following commands. (See figure 3)



DOSBox Installation tutorial

Step 6:

Now you can use all the command inside this folder just by typing it on this black window then press Enter.

For example to use the debug just write debug then press Enter. (See figure 4)

DOSBox 0.74, Cpu speed: 3000 cycles, Frameskip 0, Program: DEBUG

```
Z:\>mount D D:\
Drive D is mounted as local directory D:\

Z:\>D:

D:\>CD 8086

D:\8086>debug
-
-D 100,110
073F:0100  00 00 00 00 00 00 00 00-00 00 00 00 00 AE FE  ....
073F:0110  00                                     .
-a 200
073F:0200  mov ax,bx
073F:0202  add ax,bx
073F:0204  ret
073F:0205
-
-
-
-
-
```

For more information you can visit the following link:

<http://www.dosbox.com/DOSBoxManual.html>